



FOR IMMEDIATE RELEASE

PRESS CONTACT: Molly Kobelt, (440) 488-0214  
[Molly.Kobelt@gmail.com](mailto:Molly.Kobelt@gmail.com)

The Strange Tree Group Proudly Presents

The Three Faces of  
**DOCTOR CRIPPEN**

as part of Steppenwolf's 2<sup>nd</sup> Annual GARAGE REP  
Written by **Emily Schwartz**  
Directed by **Jimmy McDermott**

February 11 – April 24, 2011

CHICAGO (January 12, 2011) – **The Strange Tree Group** presents the world premiere of *The Three Faces of Doctor Crippen*, written by **Emily Schwartz** and directed by **Jimmy McDermott** - playing as part of Steppenwolf's 2<sup>nd</sup> annual **GARAGE REP**, three productions in rotating repertory playing February 11 – April 24, 2011 at Steppenwolf's Merle Reskin Garage Theatre, 1624 N. Halsted. **GARAGE REP 2011** includes: *The Three Faces of Doctor Crippen* by **The Strange Tree Group**, *Heddatron* by **Sideshow Theatre Company** and *Sonnets for an Old Century* by **UrbanTheater Company**.

*A world premiere that resurrects one of the strangest criminal investigations the world has ever known: the calamitously comedic tale of Dr. H. H. Crippen, England's most notoriously inept cellar murderer. Chased across the sea by destiny and Marconi's wireless telegraph, this factual (and fanciful) turn of the century tragedy explores the bizarre story of this homicidal homeopath by having three different actors (Scott Cupper, Matt Holzfeind, & Stuart Ritter) portray the part of our dear, diabolical Doctor. The Strange Tree Group returns to its grand guignol roots with this marvelously macabre tale about love, death, daring escapes and a bathtub full of body parts.*

*A SEA CHASE, A LITTLE MURDER, HEARTS IN BOXES, GIRLS DRESSED AS BOYS, POISONING, RHYMING, FAKE MUSTACHES, TELEGRAPH MESSAGES, TERRIBLE VAUDEVILLE, BETRAYAL, CORPSES, DANCING, LOVE, INTRIGUE, MAYHEM, LANTERN LIGHT, DARING ESCAPES, & GOOD LOOKING HATS.*

*JOIN US, WON'T YOU?*

**Title:** The Three Faces of Doctor Crippen  
**Playwright:** Emily Schwartz  
**Director:** Jimmy McDermott  
**Cast:** Cory Aiello, Delia Baseman, Patrick Cannon, Scott Cupper, Weston Davis, Carol Enoch, Jenifer Henry, Matt Holzfeind, Bob Kruse, Jennifer Marschand, Kate Nawrocki and Stuart Ritter

**Location:** Steppenwolf's Merle Reskin Garage Theatre, 1624 N. Halsted St.

**Schedule:** **GARAGE REP** plays Wednesdays through Sundays at 8 pm; Saturdays and Sundays at 4 pm; with a three-show marathon on Saturday, February 26, Sunday, February 27 and Sunday, April 24 at 1 pm, 4 pm & 8 pm. The press performances for **GARAGE REP** will take place on Sunday, February 27 at 1 pm (*Three Faces of Doctor Crippen*), 4 pm (*Sonnet for an Old Century*) and 8 pm (*Heddatron*). See full schedule below.

**Ticket Prices:** Tickets for **GARAGE REP** cost \$20 per play and are available through **Steppenwolf Audience Services**, 1650 N. Halsted St., by calling (312) 335-1650 or online at [www.steppenwolf.org](http://www.steppenwolf.org). A three-play pass (currently on sale) is available for \$45. Every Wednesday performance (beginning March 3, 2011) is "pay what you can." Group discounts are available by calling (312) 932-2422.

**Reference:** [www.strangetree.org](http://www.strangetree.org) or [www.steppenwolf.org/garagerep](http://www.steppenwolf.org/garagerep)  
More cool stuff can be found at [www.facebook.com/strangetreegroup](http://www.facebook.com/strangetreegroup) or <http://strangetreegroup.blogspot.com>. Press photos can be found at: <http://www.tylercoreshootspeople.com/gallery/strangetree/crippen/presspreview/>

### **GARAGE REP Schedule:**

#### **Heddatron**

Friday, 2/11 at 8 pm  
Sunday, 2/13 at 4 pm  
Thursday, 2/17 at 8 pm  
Saturday, 2/19 at 8 pm  
Wednesday, 2/23 at 8 pm  
Saturday, 2/26 at 4 pm\*  
Sunday, 2/27 8 pm\*  
Wednesday, 3/2 at 8 pm  
Saturday, 3/5 at 8 pm  
Sunday, 3/6 at 4 pm  
Friday, 3/11 at 8 pm  
Saturday, 3/12 at 4 pm  
Thursday 3/17 at 8 pm  
Sunday, 3/20 at 8 pm  
Wednesday, 3/23 at 8 pm  
Saturday, 3/26 at 8 pm  
Sunday, 3/27 at 4 pm  
Friday, 4/1 at 8 pm  
Saturday, 4/2 at 4 pm  
Thursday, 4/7 at 8 pm  
Sunday, 4/10 at 8 pm  
Wednesday, 4/13 at 8 pm  
Saturday, 4/16 at 8 pm  
Sunday, 4/17 at 4 pm  
Friday, 4/22 at 8 pm  
Sunday 4/24 at 4 pm\*

#### **Three Faces of Doctor Crippen**

Saturday, 2/12 at 4pm  
Sunday, 2/13 at 8 pm  
Friday, 2/18 at 8 pm  
Sunday, 2/20 at 4 pm  
Thursday, 2/24 at 8 pm  
Saturday, 2/26 at 8 pm\*  
Sunday, 2/27 at 1 pm\*  
Thursday, 3/3 at 8 pm  
Sunday, 3/6 at 8 pm  
Wednesday, 3/9 at 8 pm  
Saturday, 3/12 at 8 pm  
Sunday, 3/13 at 4 pm  
Friday, 3/18 at 8 pm  
Saturday, 3/19 at 4 pm  
Thursday, 3/24 at 8 pm  
Sunday, 3/27 at 8 pm  
Wednesday, 3/30 at 8 pm  
Saturday, 4/2 at 8 pm  
Sunday, 4/3 at 4 pm  
Friday, 4/8 at 8 pm  
Saturday, 4/9 at 4 pm  
Thursday, 4/14 at 8 pm  
Sunday, 4/17 at 8 pm  
Wednesday, 4/20 at 8 pm  
Saturday, 4/23 at 8 pm  
Sunday, 4/24 at 1 pm\*

#### **Sonnets for an Old Century**

Saturday, 2/12 at 8 pm  
Wednesday, 2/16 at 8 pm  
Saturday, 2/19 at 4 pm  
Sunday, 2/20 at 8 pm  
Friday, 2/25 at 8 pm  
Saturday, 2/26 at 1 pm\*  
Sunday 2/27 at 4 pm\*  
Friday, 3/4 at 8 pm  
Saturday, 3/5 at 4 pm  
Thursday, 3/10 at 8 pm  
Sunday, 3/13 at 8 pm  
Wednesday, 3/16 at 8 pm  
Saturday, 3/19 at 8 pm  
Sunday, 3/20 at 4pm  
Friday, 3/25 at 8 pm  
Saturday, 3/26 at 4 pm  
Thursday, 3/31 at 8 pm  
Sunday, 4/3 at 8 pm  
Wednesday, 4/6 at 8 pm  
Saturday, 4/9 at 8 pm  
Sunday, 4/10 at 4 pm  
Friday, 4/15 at 8 pm  
Saturday, 4/16 at 4 pm  
Thursday, 4/21 at 8 pm  
Saturday, 4/23 at 4 pm  
Sunday, 4/24 at 8 pm\*

\*Three-play marathon day

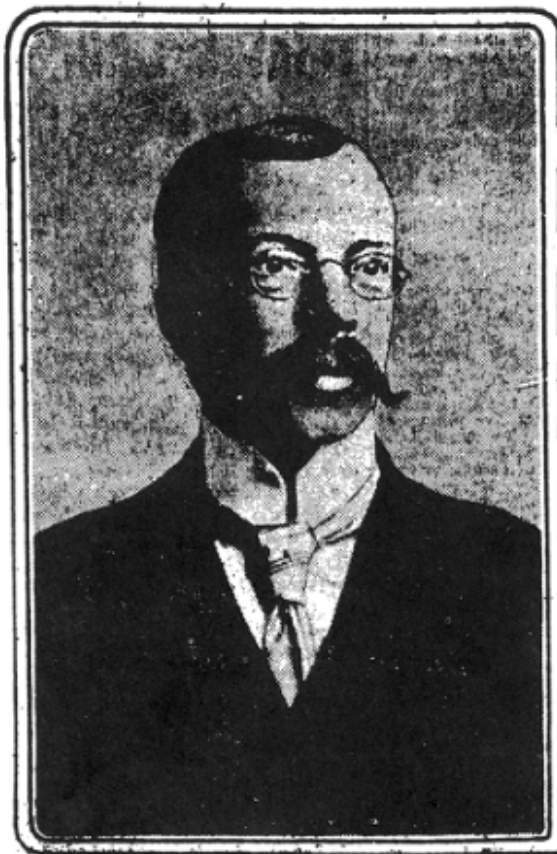
#### **About The Strange Tree Group**

A collective of multifaceted individuals dedicated to creating intricate, intimate theatrical experiences that extend beyond the boundaries of a traditional stage. We produce works that inspire creativity not only in our actors but also in our audience. We embrace the theatricality inherent in live performance and are committed to producing pieces that celebrate the strange and the magical; the dangerous and the fantastical; and the surprisingly usual nature of unusual behavior. The world is full of adventure...let us embark on this one together! For more information, please visit [www.strangetree.org](http://www.strangetree.org).

Steppenwolf's annual **GARAGE REP** features three productions from some of Chicago's most innovative, young theatre companies presented in rotating repertory. **The Garage** is dedicated to new plays, new artists and new audiences. It provides artists the opportunity to present their work with the scale, space and resources it merits. For audiences, it creates another opportunity to build a multigenerational conversation about the new, provocative work emerging from Chicago's diverse and vibrant theatre scene. **The Garage** offers programming featuring new voices for the American theater – directors, writers, designers and actors.

Support for **GARAGE REP** comes through the "Leading for the Future Initiative," a program of the NonprofitFinance Fund, funded by the Doris Duke Charitable Foundation.





HAWLEY HARVEY CRIPPEN.



MISS ETHEL CLARA LE NEVE.